

| CAP Aviation 9, rue de l'Aviation 21121 DAROIS - France Tel +33 380 35 65 10 Fax +33 380 35 65 15 www.capaviation.com | S E R V I C E B U L L E T I N | |
|--|--------------------------------------|-------------------|
| NUMBER | TITLE | ATA SYSTEM |
| 001102 | Engine cowl angle bracket | 71 |

1. PLANNING INFORMATION

1.1 Approval

NOTA: This document is a courtesy translation of its original French version. Whereas the original French version of the information and instructions is approved, this *translation* is *not* approved.
As a consequence, the approval mentions below are to be understood as applicable to the *original French version* of this SB.

This Service Bulletin corresponds to the MINOR change Nr 001102 which has been approved under the privileges of the Design Organisation Agreement DGAC Nr° F.JA.06.

The technical information contained in this document is approved under the privileges of the Design Organisation Agreement Nr° F.JA.06.

| Revision | Date | Description | Airworthiness Office Manager | Head of Design Organisation |
|----------|-----------------|----------------|------------------------------|-----------------------------|
| | | | Recommendation for approval | Approval |
| 0 | March, 7th 2001 | Original issue | | |

1.2 Effectivity

| | |
|------------------------|------------|
| Aircraft : type | CAP232 |
| Serial Nr | 001 to 018 |

| | |
|-----------------------------------|-----|
| Spare parts with Serial Nr | N/A |
| Serial Nr | |

1.2.1 For information :

The change corresponding to this Service Bulletin has been implemented during production:

| | |
|-----------------------------------|----------------------|
| Aircraft : Type | CAP232 |
| Serial Nr | From nr 019 included |
| Spare parts with Serial Nr | N/A |
| Serial Nr | |

1.3 Implementation

| | SERVICE BULLETIN | DELAI D'APPLICATION |
|----------|------------------|------------------------------------|
| | Optional | |
| X | Recommended | During next maintenance operation. |
| | Mandatory | |

1.4 Reason

To inform users about angle brackets installing possibility at the bottom of firewall to improve engine cowl mounting for CAP 232, serial Nr 001 to 018 included.

1.5 Description

Engine cowl is fastened on firewall by means of three support angles ⁽¹⁾ on which 17 captive nuts are located ⁽²⁾. On Nr 001 to 018 aircraft, it is recommended to improve engine cowl mounting by installing two angle brackets , each of them equipped with captive nuts as well.

⁽¹⁾: CAP232 Illustrated parts catalogue, page 71-10-01, items 16, 14 & 19.

⁽²⁾: CAP232 Illustrated parts catalogue, page 71-10-01, item 5.

1.6 Manpower

The instructions contained in this Service Bulletin can be performed only by an approved workshop or maintenance unit.

The lead-time necessary to implement the modification is evaluated to about 2 hours for one person.

1.7 Material

The new and modified parts make up the material, and are mentioned in the chapter 3 of this Service Bulletin.

Spare parts are to be supplied at ASCO Aviation Service Centre (Tel : +33 380 35 61 98, Fax : +33 380 35 60 58).

1.8 Tooling

Standard tooling

2. ACCOMPLISHMENT INSTRUCTIONS

2.1 Removal operations

- (A) Remove wing root fairings.
- (B) Remove upper and lower engine cowls.
- (C) Remove stainless plate.

2.2 Change operations

- (A) Put left angle bracket in place sharing the fuel filter external screw (refer to fig. 1).

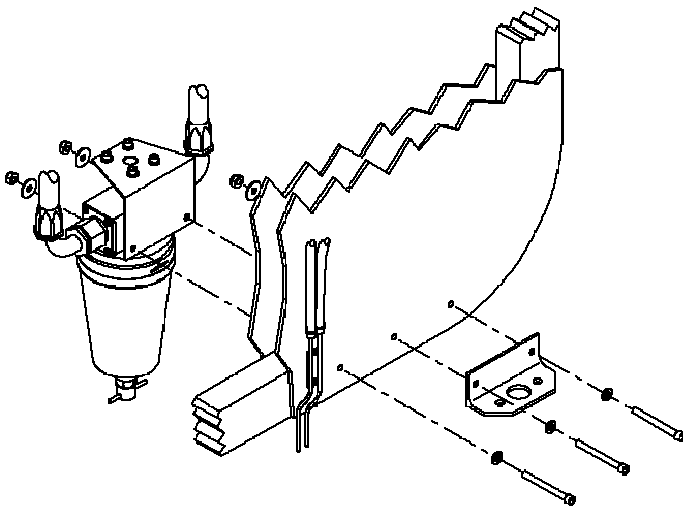


Figure 1

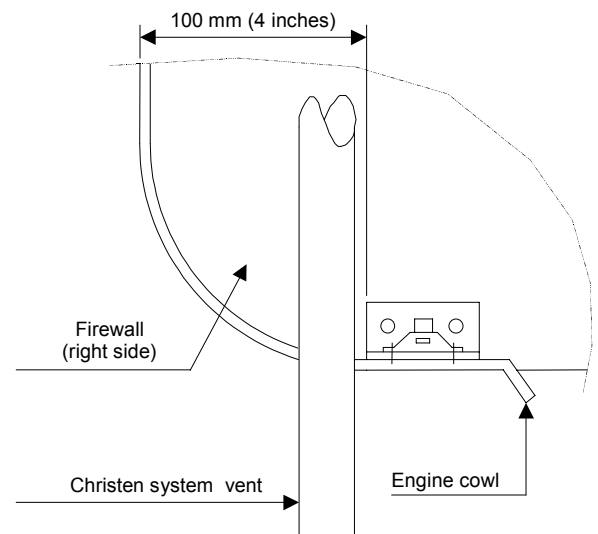


Figure 2

- (B) Drill a 5 mm hole into the firewall bottom part for the second screw.
- (C) Put second angle bracket on right side at 100 mm (4 inches) from fuselage flank (refer to fig. 2).
- (D) Drill two 5 mm holes into the firewall bottom part to install the right angle bracket.
- (E) Put in place upper and lower engine cowls.
- (F) Mark and locate fixation holes with engine cowl and angle bracket positioned.
- (G) Remove lower engine cowl.
- (H) Drill holes into engine cowl (refer to fig.3).
- (I) Countersink angle bracket holes to flush rivets heads.
- (J) Rivet captive nuts on each angle bracket after having inserted the two plates (refer to fig. 4). If the engine cowl is too thick, the screw may not have enough length in the nut. In that case, only one plate may be inserted. Check if the screw is not stop at the end of the nut in stead of tightening the engine cowl.

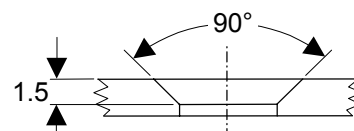


Figure 3

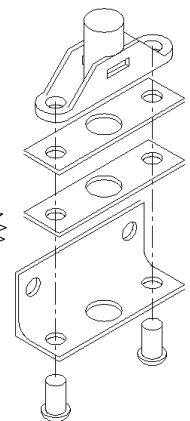


Figure 4

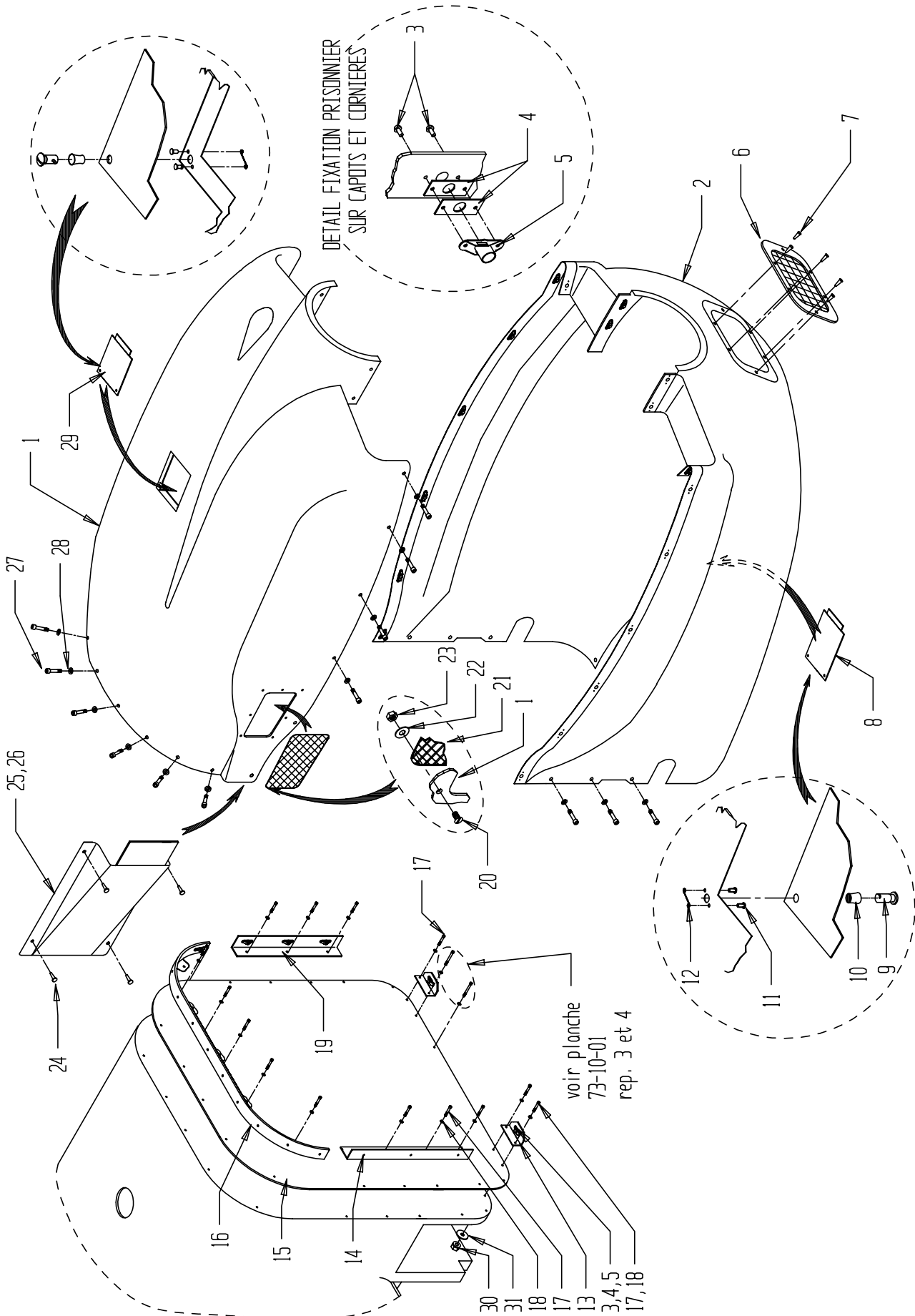
2.3 Installation operations

- (A) Install upper and lower engine cowls.
- (B) Install wing root fairings.
- (C) Reinstall stainless plate.

3. MATERIAL INFORMATION

Complete set of components can be ordered under designation : ENGINE COWL ANGLE BRACKET MODIFICATION KIT, with management reference : 00-00-09-000.

| New P/N. | Quantity | Key word | Old P/N. | Instructions |
|---|----------|-------------------------|----------|--------------|
| 7114-9912024 | 2 | Angle bracket | - | New part |
| E25125B5M35QLAZ | 4 | SCREW CHC 12.9 ZI M5X35 | - | New part |
| 23111AG050L | 4 | FLAT WASHER 5X10 | - | New part |
| 23116AG050L | 4 | FLAT WASHER 5X16 | - | New part |
| L22541-050N | 4 | SELF LOCKING NUT M5 | - | New part |
| 7114-9219201 | 4 | PLATE | - | New part |
| 1604R02-1 | 2 | CAPTIVE NUT | - | New part |
| TF2.4x10ALX | 4 | BLIND RIVET | - | New part |
| CA21077-4 | 2 | WASHER | - | New part |
| 1604S41-030BP | 2 | SCREW | - | New part |
| <i>For current prices, please contact ASCO Aviation Service Center.</i> | | | | |



71-10-01

Fig. 1 - Capotage



| FIG. REP. | BLOC D'IDENTIFICATION | | NNO | DÉSIGNATION 1234567 | APPLI. | QTE |
|-----------|-----------------------|---------------------|------------------|------------------------|---------|-----|
| | CODE | REFERENCE FABRICANT | | | | |
| 1 001 | FA9C1 | CAP230-70-29-02 | 1560-14-420-2507 | Capotage | | |
| 1 002 | FA9C1 | 7114-9209116 | | Capot | 001 999 | 1 |
| 1 003 | F8399 | TF2.4x10ALX | | Capot | 001 999 | 1 |
| 1 003 | F8399 | TF2.4x10ALX | | Rivet aveugle | 001 018 | 70 |
| 1 004 | F8399 | TF2.4x10ALX | | Rivet aveugle | 019 999 | 74 |
| 1 004 | FA9C1 | 7114-9219201 | | Plaque | 001 018 | 70 |
| 1 004 | FA9C1 | 7114-9219201 | | Plaque | 019 999 | 74 |
| 1 005 | 29372 | 1604R02-1 | | Prisonnier | 001 018 | 35 |
| 1 005 | 29372 | 1604R02-1 | | Prisonnier | 019 999 | 37 |
| 1 006 | FA9C1 | 7524-9809003 | | Grille | 001 999 | 1 |
| 1 007 | F0110 | E25661B29C130ZES | 5305-14-495-3236 | Vis | 001 999 | 6 |
| 1 008 | FA9C1 | CAP230-70-29-03 | | Porte de visite | 001 999 | 1 |
| 1 009 | 72794 | AJ5-45 | 5325-00-285-2804 | Verrou Dzus | 001 999 | 4 |
| 1 010 | 72794 | GA5-312 | 5325-00-171-4596 | Oeillet | 001 999 | 4 |
| 1 011 | 80205 | NAS1739B4-8 | 5320-01-091-7986 | Rivet aveugle | 001 999 | 8 |
| 1 012 | 72794 | S5-225 | 5325-00-285-3374 | Ressort | 001 999 | 4 |
| 1 013 | FA9C1 | 7114-9912024 | | Support | 019 999 | 2 |
| 1 014 | FA9C1 | CAP230-70-28-02 | 1560-14-420-2504 | Support | 001 999 | 1 |
| 1 015 | FA9C1 | CAP230-70-05-00 | | Toile pare feu | 001 999 | 1 |
| 1 016 | FA9C1 | CAP230-70-26-00 | 1560-14-420-2500 | Support | 001 999 | 1 |
| 1 017 | F0110 | E25125B50M35QLAZ | | Vis CHC | 001 018 | 11 |
| 1 017 | F0110 | E25125B50M35QLAZ | | Vis CHC | 019 999 | 14 |
| 1 018 | F0111 | 23111AG050L | 5310-14-307-2457 | écrou hexagonal | 001 018 | 11 |
| 1 018 | F0111 | 23111AG050L | 5310-14-307-2457 | écrou hexagonal | 019 999 | 14 |
| 1 019 | FA9C1 | CAP230-70-28-01 | 1560-14-420-2503 | Support | 001 999 | 1 |
| 1 020 | F0111 | 22291BC030010L | 5305-14-288-7613 | Vis | 001 999 | 8 |
| 1 021 | FA9C1 | 7114-9912025 | | Grille | 001 999 | 1 |
| 1 022 | F0111 | 23116AG030L | 5310-14-447-6924 | Rondelle large | 001 999 | 8 |
| 1 023 | F0110 | E27415F30QQVTLZ | 5310-14-238-3097 | Ecrou hexagonal | 001 999 | 8 |
| 1 024 | F0110 | E25663A29C95BJS | 5305-14-446-5424 | Vis autotaraudeuse | 001 999 | 8 |
| 1 025 | FA9C1 | CAP230-10-26-01 | | Carénage | 001 999 | 1 |
| 1 026 | FA9C1 | CAP230-10-26-02 | | Carénage | 001 999 | 1 |
| 1 027 | D0680 | 1604S41-030BP | | Vis | 001 018 | 35 |
| 1 027 | D0680 | 1604S41-030BP | | Vis | 019 999 | 37 |
| 1 028 | 29372 | CA21077-4 | 5310-01-076-4966 | Rondelle | 019 999 | 37 |
| 1 028 | 29372 | CA21077-4 | 5310-01-076-4966 | Rondelle | 001 018 | 35 |
| 1 029 | FA9C1 | CAP230-70-29-04 | | Porte de visite | 001 999 | 1 |
| 1 030 | F0111 | L22541-050N | | écrou autofreiné | 001 018 | 11 |
| 1 030 | F0111 | L22541-050N | | écrou autofreiné | 019 999 | 3 |
| 1 031 | F0111 | 23116AG050L | 5310-14-247-9543 | rondelle plate | 019 999 | 4 |